

The Hereford Cattle Society



A Guide to Pre-Sale Checks in respect of animals consigned to the Society's Official Sales



A GUIDE TO PRE-SALE CHECKS

Following arrival at the Sale Premises all cattle are subject to an official inspection conducted by a Veterinary Surgeon appointed by the Society.

The aim of the inspection is to ensure that all cattle sold at Sales are free from any Health and/or Structural defects.

In an endeavour to avoid disappointment of having cattle rejected at the Pre-Sale Inspection members should address the following checks before consigning cattle to the Society's Official Sales:-

- Ensure that all entries are correctly Double Tagged in accordance with DEFRA Regulations.
- Ensure that all entries are accompanied by their correct Passport and that the Date of Birth is as notified to the Society.
- Ensure that Dentition is correct – teeth must make proper contact with the Dental Pad of the Upper Jaw.

Those animals found by the Official Veterinary Surgeon to have severely undershot or overshot jaws will be rejected. (See last page of this Guide for advice).

- Bulls Testicles will be measured and must, at the widest point of the scrotum, attain a minimum measurement of 32 cms. The testicles must also be of equal size, with normal conformation and consistency.
- Ensure that all animals are free from Warts (particular attention should be paid to the Sheath and Scrotal area), Ringworm, Mange, Lice and other infections or contagious diseases.
- All Bulls must be rung and halter led.
- Ensure that all Bulls meet the minimum weight for age standard as per the chart opposite.
- All entries, with the exception of calves sold with their dams, MUST be DNA tested for Sire Verification and Hypotrichosis. No animals testing positive for Hypotrichosis will be accepted for sale.
- Council Members will be pleased to advise members on selection of animals for Entry into the Society's Official Sales, but no guarantee will be given or implied that the Official Veterinary Surgeon will pass the animals concerned.
- Ensure that all animals are sound on their legs and feet. Exhibitors who find that any of their entries require their feet to be trimmed, should arrange to do so well in advance of the Sale, otherwise they run the risk of this treatment affecting the mobility of their animal, resulting in rejection from the Sale.
- Females MUST be sound in udder.
- All Females, including "For Sale Only" entries, MUST have been washed and groomed and also halter tied during the pre-Sale inspection.
- All entries for Sales in Hereford, including calves, MUST be T.B. tested within 60 days of the Sale. For Sales held in Carlisle, Dungannon and Stirling, please check with the Auctioneers.
- All entries MUST be BVD tested and vaccinated in accordance with the instructions issued by the Society.
- Sale animal Health Declaration Cards preferably supplied by your Herd Health Scheme Provider MUST accompany all cattle and displayed at the Sale.
- Official Sale Herd Health Declaration Forms MUST be submitted with entries.
- The Sale Animal Health Declaration Form regarding TB & BVD MUST be submitted at least one week before the Sale.

BULLS WEIGHT FOR AGE GUIDELINES

Days	Min. Wt. KG	Days	Min. Wt. KG	Days	Min. Wt. KG	Days	Min. Wt. KG
365	495	520	650	675	797	830	909
370	500	525	655	680	801	835	911
375	505	530	660	685	806	840	913
380	510	535	665	690	811	845	915
385	515	540	670	695	814	850	917
390	520	545	675	700	818	855	919
395	525	550	680	705	822	860	921
400	530	555	685	710	826	865	923
405	535	560	690	715	830	870	925
410	540	565	695	720	834	875	927
415	545	570	700	725	838	880	929
420	550	575	705	730	842	885	931
425	555	580	710	735	846	890	933
430	560	585	715	740	851	895	935
435	565	590	720	745	854	900	937
440	570	595	725	750	857	905	939
445	575	600	730	755	861	910	941
450	580	605	734	760	864	915	943
455	585	610	739	765	868	920	945
460	590	615	743	770	871	925	947
465	595	620	748	775	875	930	949
470	600	625	752	780	878	935	951
475	605	630	756	785	882	940	953
480	610	635	761	790	885	945	955
485	615	640	765	795	889	950	957
490	620	645	770	800	892		
495	625	650	774	805	895		
500	630	655	779	810	898		
505	635	660	783	815	901		
510	640	665	788	820	904		
515	645	670	792	825	907		

HEREFORD PRE-SHOW AND SALE INSPECTION

Certain conformation faults are known to be hereditary in cattle. Thus, when presented for sale, inspection for some of these faults can only benefit the Breed.

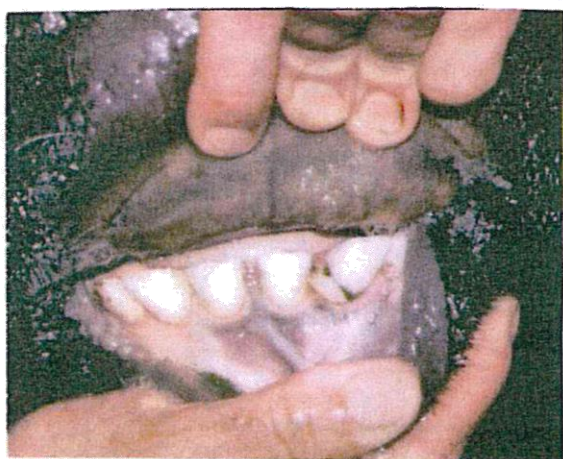
Obviously, the animal must be able to be led for a gait inspection to be possible.

Malocclusion of the incisor teeth is known to be a hereditary fault. The incisor teeth must bite onto the dental pad.

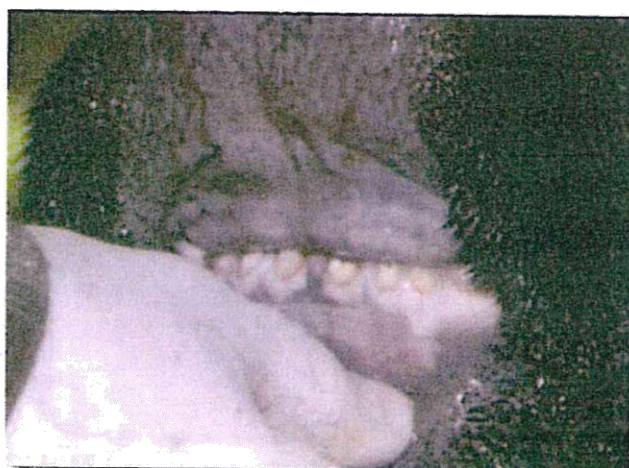
Remember to check mouth for being over or under shot (teeth not meeting the pad).



correct and on the pad



over shot



under shot